



RoadSide Stations (RSS)

# Northern Corridor RSSs in **Burundi.**

# PROJECT INFORMATION PAPER



[www.roadsidestations.org](http://www.roadsidestations.org)



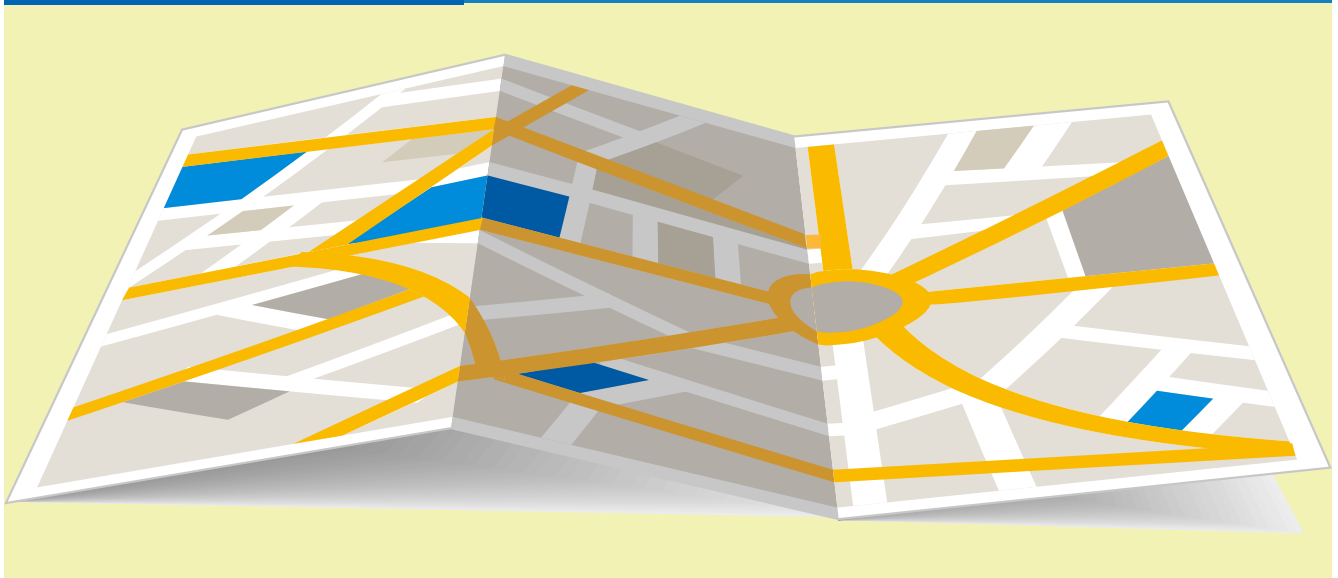
Northern Corridor  
Transit and Transport  
Coordination Authority

# Contents

RoadSide stations pg. 1

Burundi Northern  
Corridor Transport  
Infrastructure Network pg. 2

RSSs in Burundi pg. 4 - 7



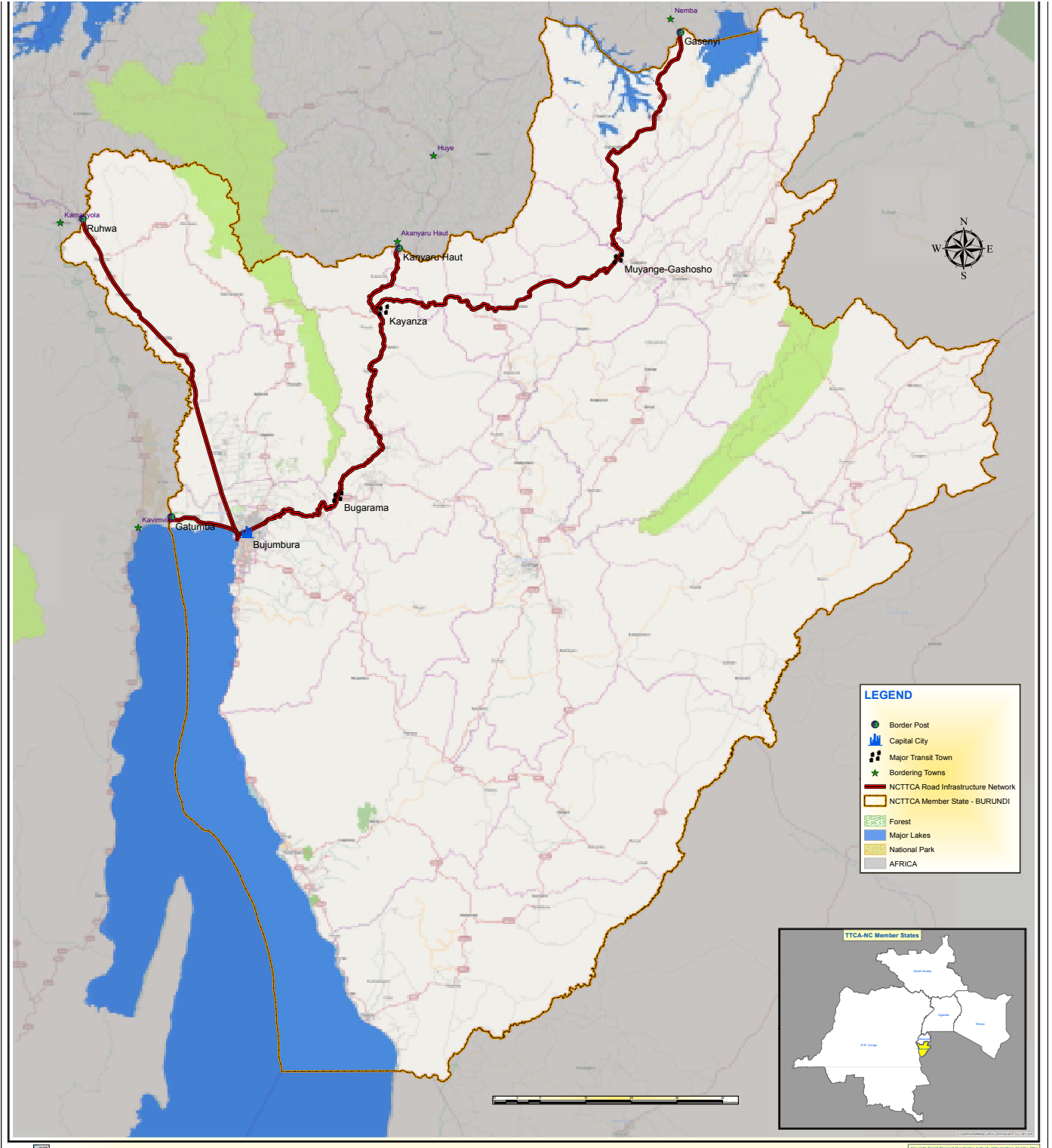
# RoadSide Stations

---

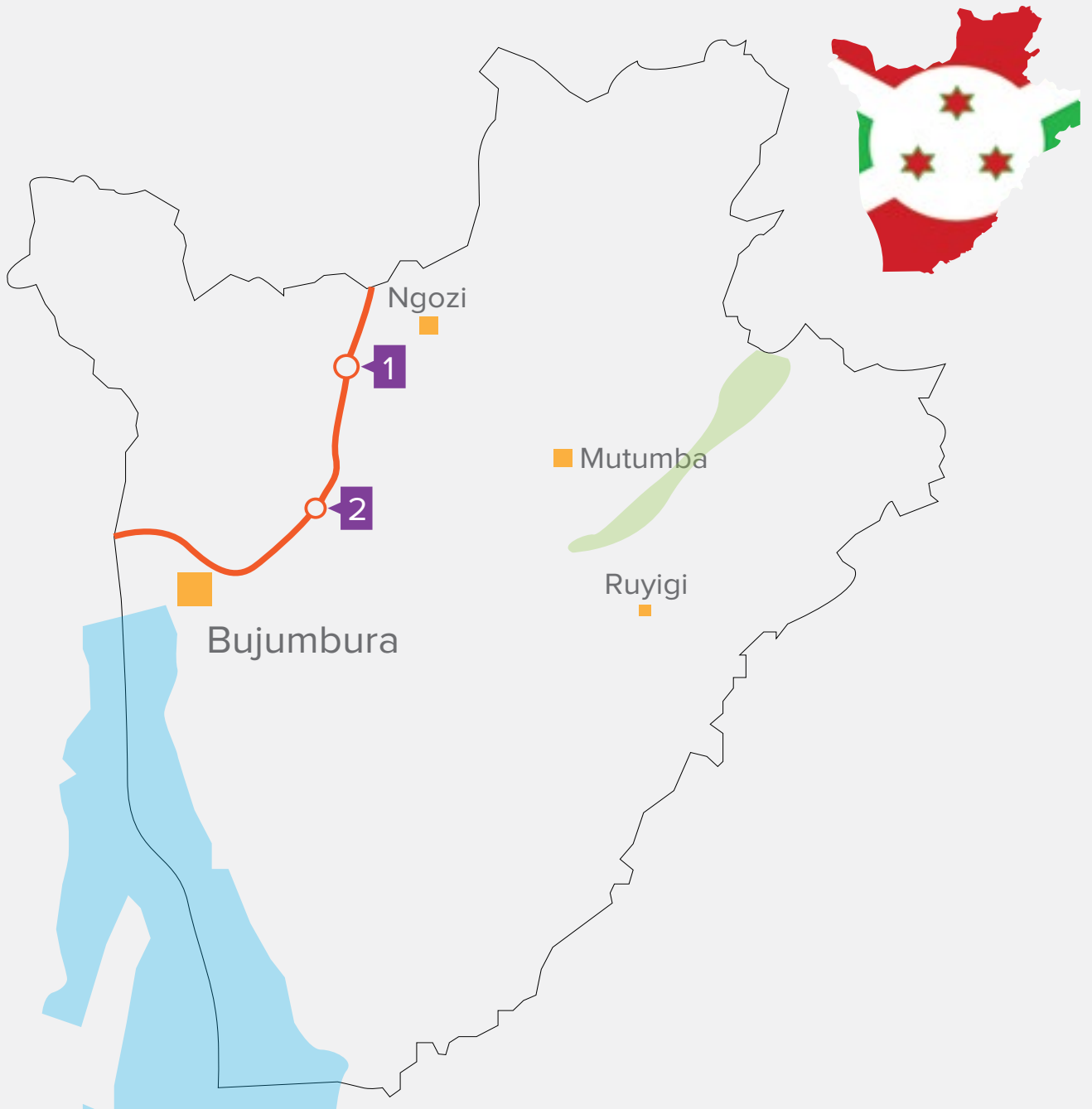
The Project Information Paper highlights the following information:

- > Traffic foreseen in the area of the RSS
- > Number of vehicles stopping in the RSS
- > Number of users per day
- > Average time parked in the RSS
- > Map of location in the corridor
- > Design scheme
- > Investment cost
- > Maintenance and operating cost
- > Global financial feasibility
- > Sponsors financial return
- > Solvency/Bankability
- > Weighted Average Cost of Capital (WACC), Debt
- > Summary of Financing Potential
- > Financial Cash Flow (FCF)
- > Equity cash flows

# Burundi Northern Corridor Transport Infrastructure Network



# RoadSide Stations in Burundi

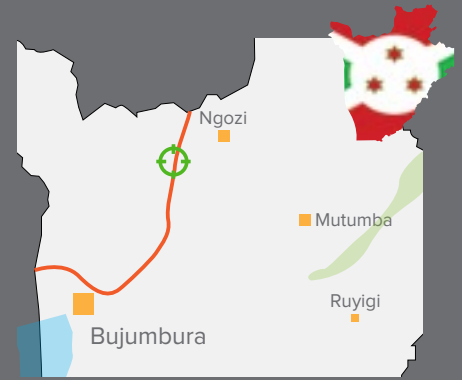


1. Kayanza

2. Bugarama



# Kayanza RoadSide Station



## Proposed Amenities

1. Service station
2. Shops
3. Washrooms
4. Bureau office
5. Restaurant
6. Hotel
7. Truck repair
8. Bar
9. Truck parking
10. Pedestrian and green areas
11. Green areas

## Proposed Design



## Vehicle Statistics

### Passenger Cars



**411**

Number of Vehicles Stopping Daily	0
Average Number of Passengers per Vehicle	2
Number of users per day	0
Average length of time parked (hours) per vehicle	0.5

### Minibuses



**365**

Number of Vehicles Stopping Daily	0
Average Number of Passengers per Vehicle	10
Number of users per day	0
Average length of time parked (hours) per vehicle	1

### Large Buses



**17**

Number of Vehicles Stopping Daily	0
Average Number of Passengers per Vehicle	30
Number of users per day	0
Average length of time parked (hours) per vehicle	1

### Trucks



**172**

Number of Vehicles Stopping Daily	43
Average Number of Passengers per Vehicle	2
Number of users per day	86
Average length of time parked (hours) per vehicle	1

## Estimated Investment Cost

Investment Cost (US \$)

**722,533**

Maintenance and Operating Cost (US\$/Yr)

**26,774**

## Global Financial Feasibility

FNPV

**-0.85 Mill. US\$**

FIRR

**--%**

Disc. P/B period

**--**

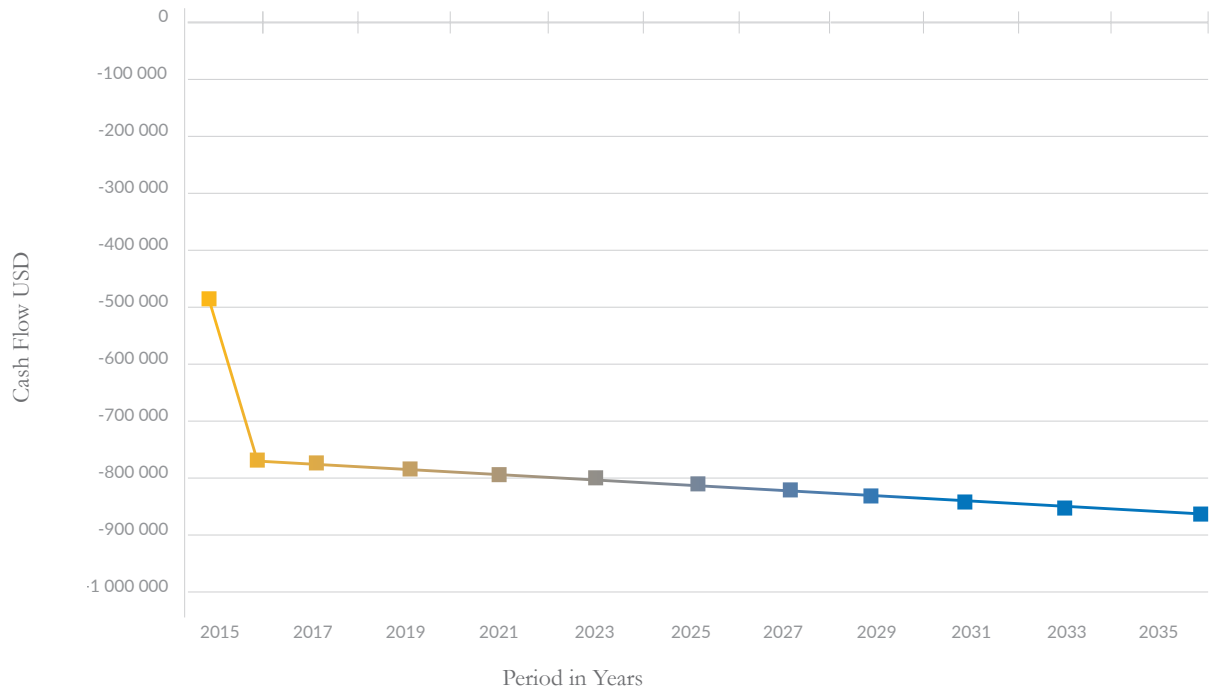
## Summary

**LOW PRIVATE**  
Financing Potential

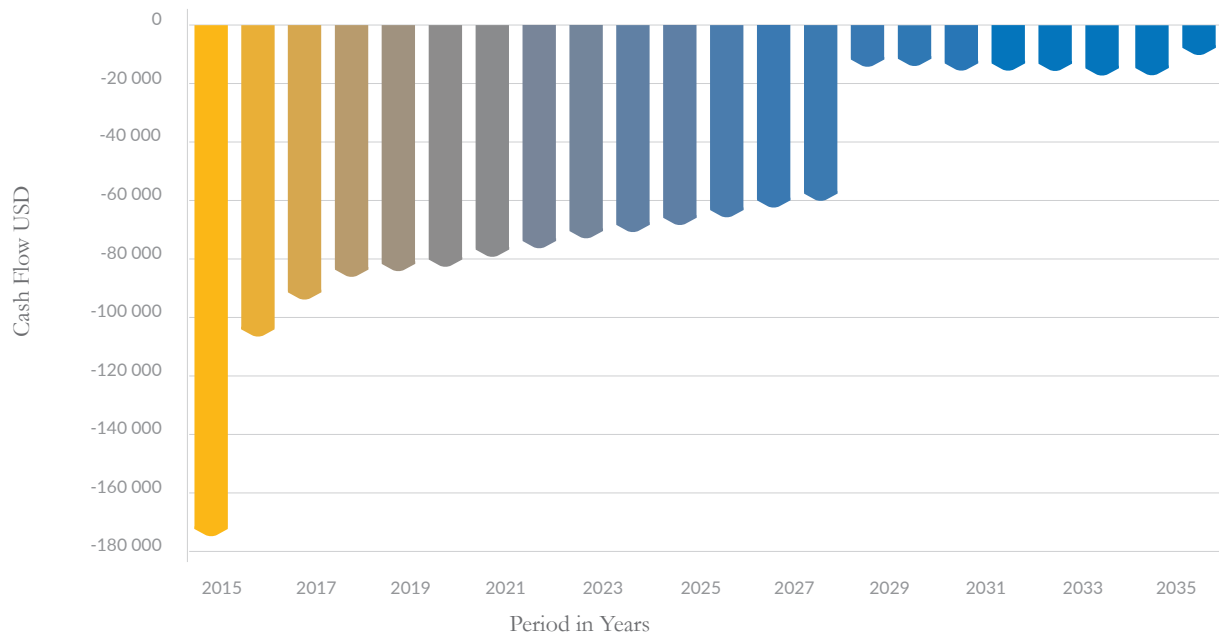
# Kayanza

## RoadSide Station

### Financial Cash Flow | Value Creation



### Equity Cash Flow



#### Sponsors Financial Return

Equity FIRR

--

#### Solvency/Bankability

DSCR 5/yr

-0.12

#### General Assumptions

WACC Rate

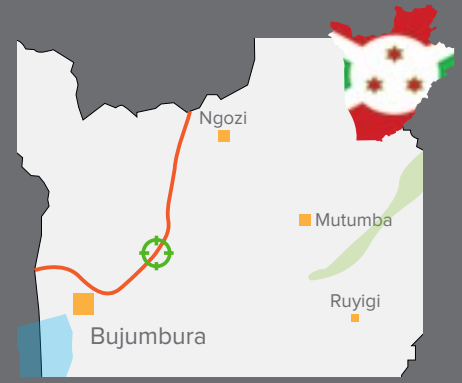
8.19%

Cost of capital (ke)

11.5%



# Bugarama RoadSide Station



## Proposed Amenities

- 1. Service station
- 2. Shops
- 3. Washrooms
- 4. Restaurant
- 5. Bureau station
- 6. Truck repair
- 7. Vehicle cleaning
- 8. Police check point
- 9. Security services
- 10. Hotel
- 11. Truck parking
- 12. Pedestrian and green areas
- 13. Green areas

## Proposed Design



## Vehicle Statistics

### Passenger Cars



**606**

Number of Vehicles Stopping Daily	0
Average Number of Passengers per Vehicle	2
Number of users per day	0
Average length of time parked (hours) per vehicle	0.5

### Minibuses



**365**

Number of Vehicles Stopping Daily	0
Average Number of Passengers per Vehicle	10
Number of users per day	0
Average length of time parked (hours) per vehicle	1

### Large Buses



**17**

Number of Vehicles Stopping Daily	0
Average Number of Passengers per Vehicle	30
Number of users per day	0
Average length of time parked (hours) per vehicle	1

### Trucks



**286**

Number of Vehicles Stopping Daily	72
Average Number of Passengers per Vehicle	2
Number of users per day	143
Average length of time parked (hours) per vehicle	1

## Estimated Investment Cost

Investment Cost (US \$)

**850,204**

Maintenance and Operating Cost (US\$/Yr)

**30,327**

## Global Financial Feasibility

FNPV

-1.06 Mill. US\$

FIRR

--%

Disc. P/B period

--

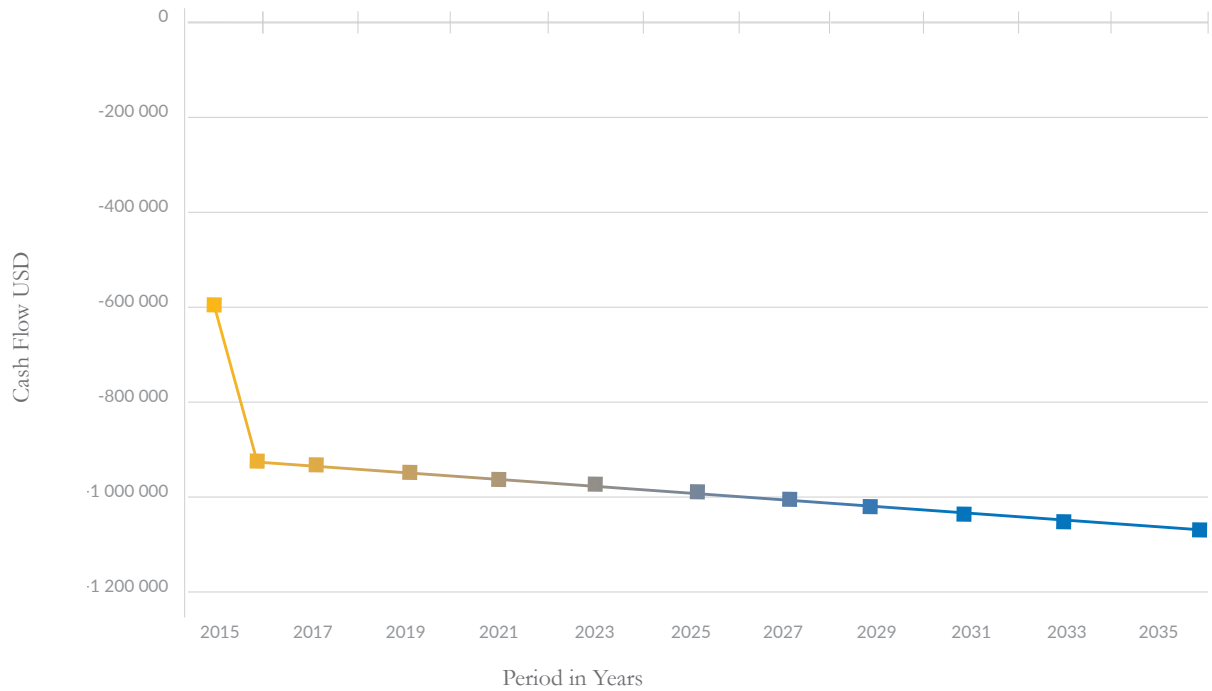
## Summary

**LOW PRIVATE**  
Financing Potential

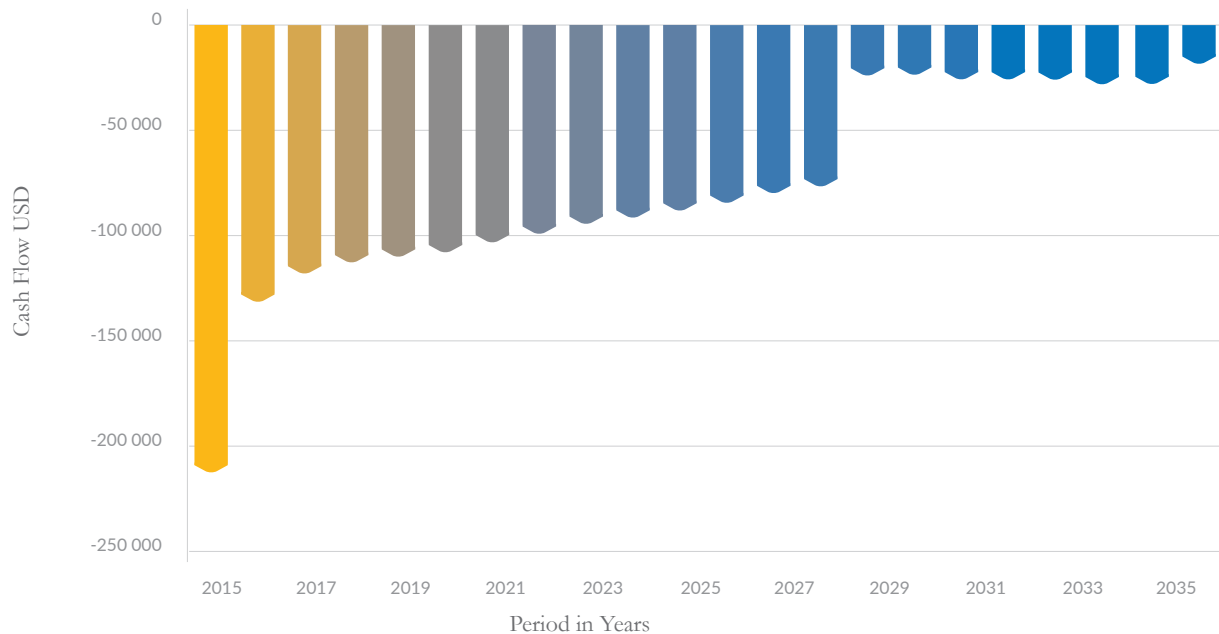
# Bugarama

## RoadSide Station

### Financial Cash Flow | Value Creation



### Equity Cash Flow



#### Sponsors Financial Return

Equity FIRR

--

#### Solvency/Bankability

DSCR 5/yr

-0.13

#### General Assumptions

WACC Rate

8.19%

Cost of capital (ke)

11.5%





---

**For Technical Information, Facilitation and Coordination Contact:**



Northern Corridor Transit and Transport Coordination Authority  
House 1196, Links Road, Nyali.



P. O. Box 34068 - 80118  
Mombasa, Kenya



Email:  
[tca@ttcanc.org](mailto:tca@ttcanc.org)



Telefax:  
+254 41 4470735



Phone:  
+254 41 4470734  
+254 20 2000881



Web  
[www.ttcanc.org](http://www.ttcanc.org)

---

**For Investment Opportunities Contact  
the respective Northern Corridor Member States**

(Kenya, Uganda, Rwanda, Burundi, South Sudan, DR Congo)

---